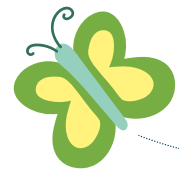




Nature VISION



NEWS

SPRING NEWSLETTER

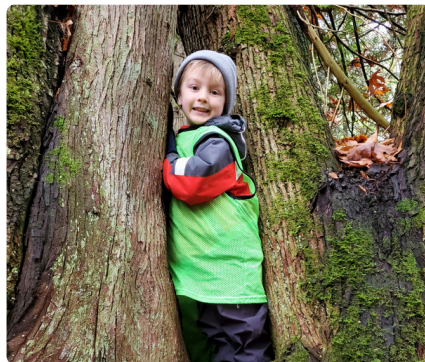
APRIL 2024

SAVE THE DATE FOR GiveBIG MAY 7-8

Have you ever heard the term “child-like wonder?” At Nature Vision, this wonder is cultivated in every lesson! Students’ eyes widen at the opportunity to look at salmon eggs, animal skulls, worms, pelts, aquatic insects, and more. Classes become immersed in science-focused programs that evoke thoughtful discussions and exciting discoveries both indoors and out. Students learn to view the natural world through a new lens, instilling a sense of appreciation and care of their local environments. “When will you be back?” is a question we often hear from students and teachers alike!

We are able to bring our impactful programs to students who need them most by making them free to schools. Our work is made possible thanks in part to community donations. Please consider donating to Nature Vision on May 7-8th for GiveBIG - a statewide nonprofit fundraising campaign - so that we can continue connecting students to science and nature.

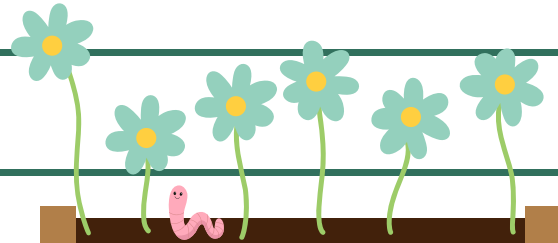
Support our environmental programs by donating for GiveBIG at wagives.org/organization/Nature-Vision



PRE-K SPOTS OPEN

The Nature Vision Preschool still has a few open spots in the Pre-K Discoveries Class for the 2024-25 school year! Our preschool combines the wonders of the outdoors with play-based learning. Located in the unique setting of an educational farm and forested park, this preschool supports the learning and development of our students mentally, emotionally, physically and socially.

Learn more at naturevision.org/preschool



INSIDE THIS EDITION:

- DONATE FOR GiveBIG
- PRE-K OPENINGS
- SUMMER CAMP REGISTRATION
- RESTORATION SPOTLIGHT
- NEW STAFF

SUMMER CAMP REGISTRATION

Nature Vision Summer Camp registration is open NOW! Sign up your 6-11 year old for our weekly camps in Shoreline, Redmond, and Sammamish. Engaging and unique, these programs offer fun and exciting experiences in the natural world led by our experienced professional educators. Campers will get to explore their local environments, practice scientific skills, get creative and make new friends in the great outdoors!

Find more details and register at naturevision.org/day-camp-programs-and-summer-programs



Above: Campers playing a game.
Far Left: Student observing salmon eggs.
Center: Preschooler exploring a tree.



RESTORATION SPOTLIGHT



This year, we have a total of 395 students across 40 classes working with our city partners to restore local environments!

- Classes in the Snoqualmie Valley and Riverview School Districts are planting native plants at Carnation Farms with Stewardship Partners.
- Students from Kent schools are working with the City of Kent at Van Doren's Landing Park to remove invasive blackberry.
- With Green Tukwila, Dimmitt Middle classes are focused on invasive plant removal at Tukwila Park.

Thank you to our partners for helping to provide meaningful, hands-on stewardship opportunities for students!



Above: Students planting native plants.
Top Right: Campers on a nature walk.



MEET OUR NEWEST STAFF!

Nature Vision's team of amazing educators is quickly growing! Join us in welcoming our six new staff members:

Katelyn



Tallie



Cassandra



Morgan



Emma



Victoria



PROGRAM REGISTRATION IS OPEN FOR THE 2024-2025 SCHOOL YEAR

Register your K-12 classes NOW for our free science programs (or spread the word) by visiting

naturevision.org/free-programs-for-schools



Follow us:

